

Kitchen Wows! and Wonders!

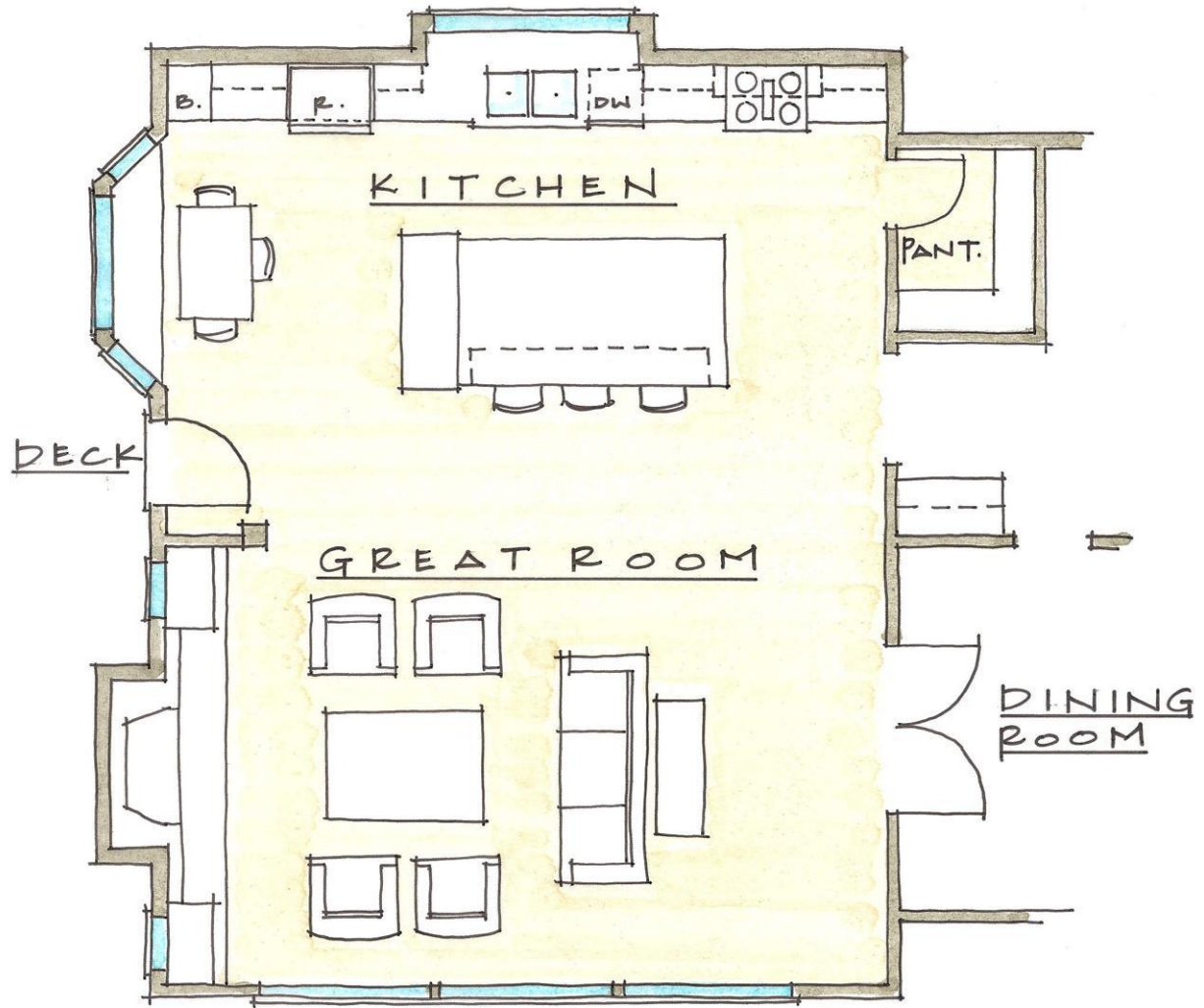
*See all of the latest features in
functional kitchen design and concepts.*



Kitchen Layouts

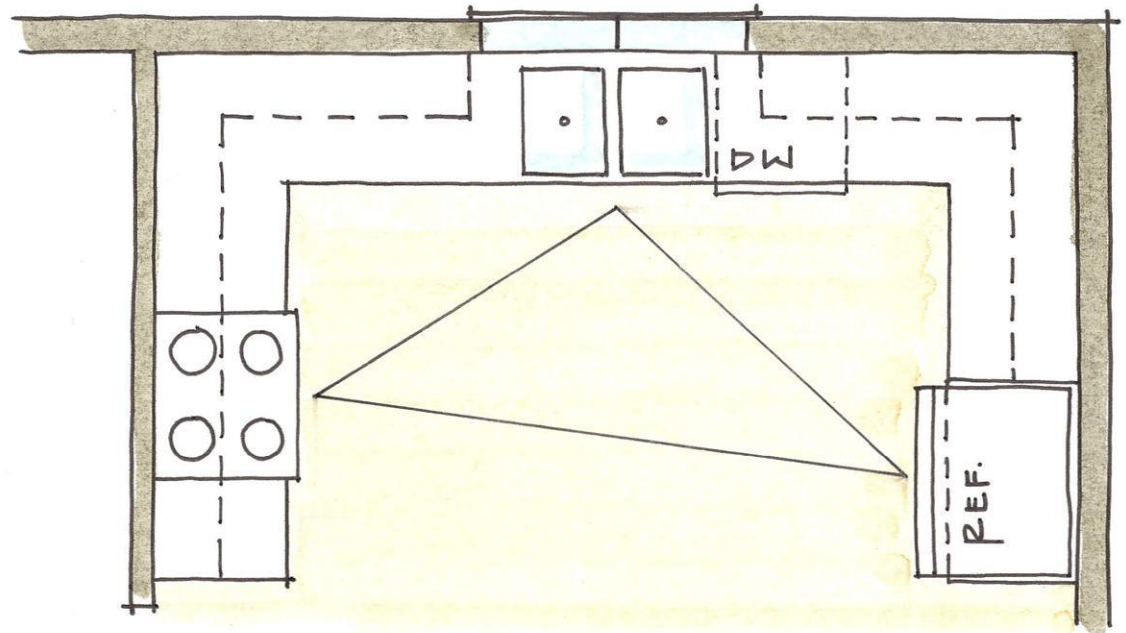


Single Wall
U-shaped
G-shaped
Galley
L-shaped



SINGLE WALL KITCHEN

Single Wall
U-shaped
G-shaped
Galley
L-shaped

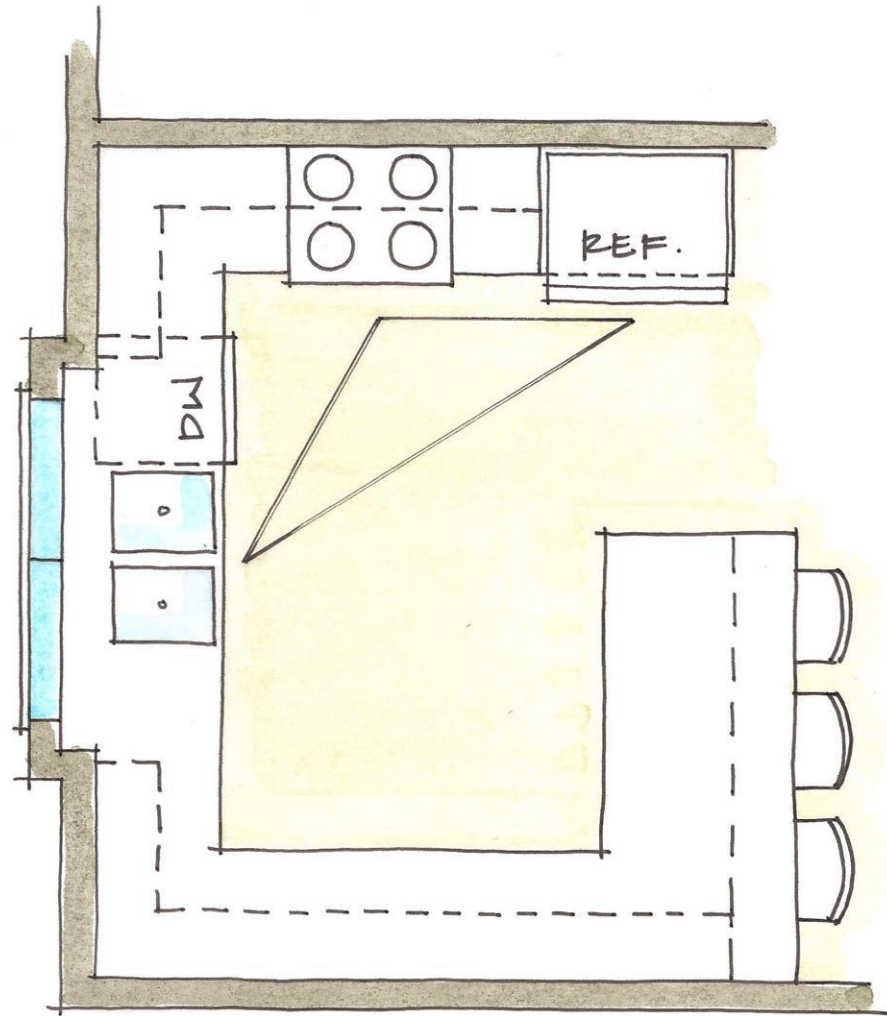


U-SHAPE KITCHEN

Single Wall
U-shaped
G-shaped
Galley
L-shaped

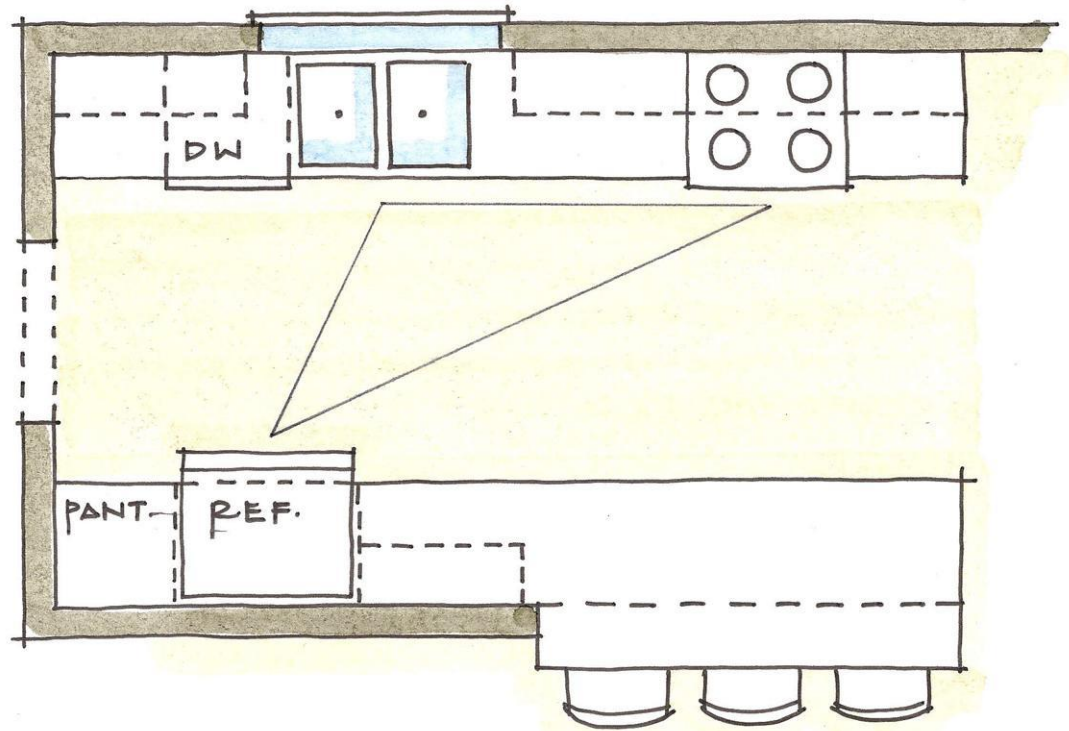


Single Wall
U-shaped
G-shaped
Galley
L-shaped



G-SHAPE KITCH.

Single Wall
U-shaped
G-shaped
Galley
L-shaped

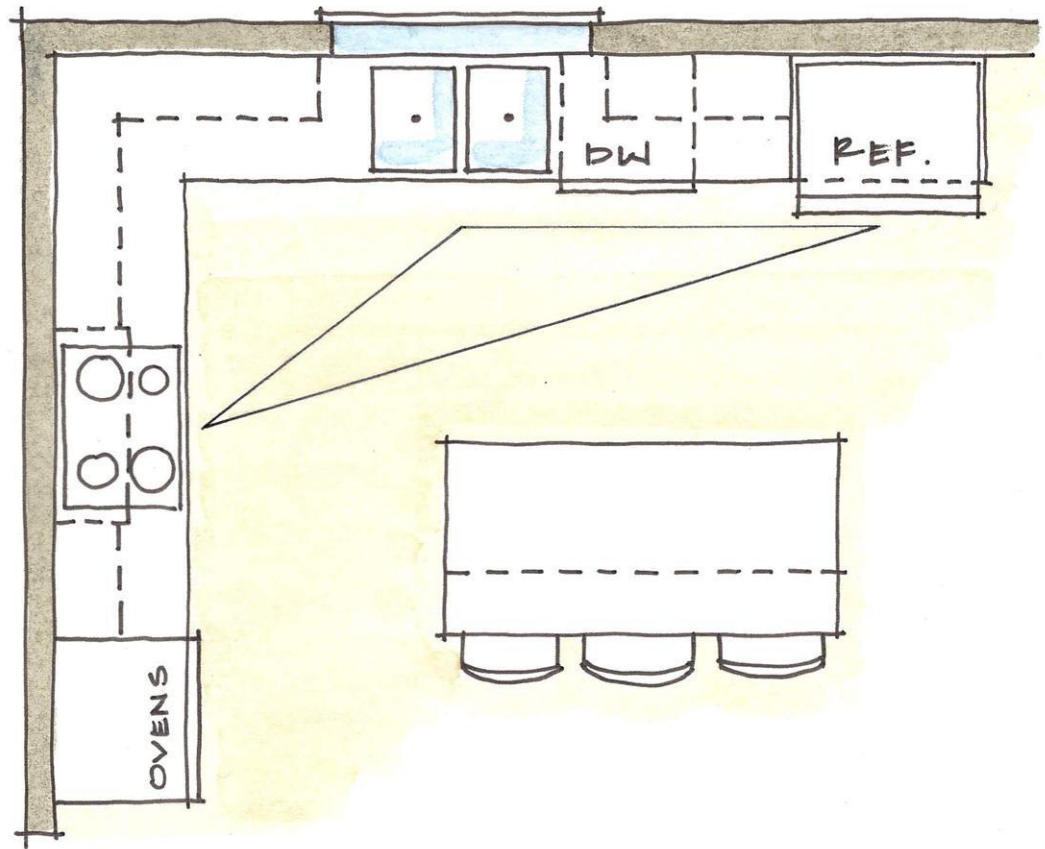


CORRIDOR KITCHEN

Single Wall
U-shaped
G-shaped
Galley
L-shaped



Single Wall
U-shaped
G-shaped
Galley
L-shaped



L-SHAPE KITCHEN

Single Wall
U-shaped
G-shaped
Galley
L-shaped



The Three Major Work Stations



Clean up

Food Storage

Cooking

- The kitchen sink should be centrally located.
- There should be at least 24" of countertop on one side and at least 18 " on the other side of the sink.
- The dishwasher should be located within 36 " of the sink.

Clean up
Food Storage
Cooking

- A minimum of 15" is recommended for counter space next to the refrigerator.
- The same rule of thumb is true for a pantry.

Clean up
Food Storage
Cooking

- A minimum of 15" of counter space on one side and 9" on the other is recommended.
- Locate a drawer for pot holders and cooking utensils within reach of the range or cook-top.
- Wall ovens and microwaves are not included in the work triangle because they are not used as often as the range.
- The ideal location for the microwave is 48" off the floor.

*Range hoods
are more and
more becoming
the focal point
of the kitchen.*



Range hoods are more and more becoming the focal point of the kitchen.



Prep area

*Island with
sink*

*Island with
cook-top*



- A minimum width of 36" is recommended for food prep.

Prep area

*Island with
sink*

*Island with
cook-top*



Prep area

*Island with
sink*

*Island with
cook-top*



Cabinets



Stock vs. Custom



Stock or Pre-Fabricated Cabinets

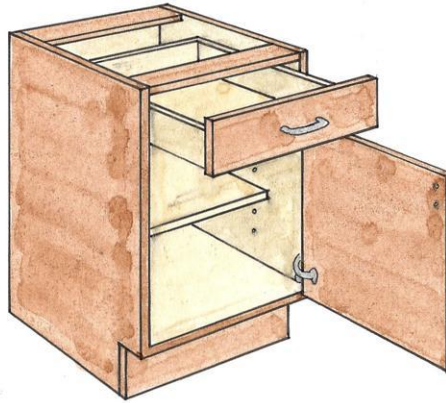
- Readily available from home centers, lumber yards and kitchen product dealers.
- They are only available in standard sizes.
- They are available in a limited selection of sizes, styles, wood species and finishes.
- Installation is done by the contractor or the homeowner.

Custom Cabinets

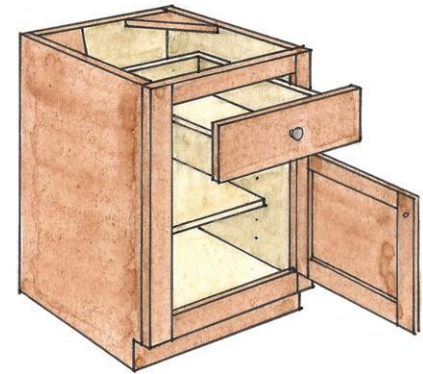
- Generally, there is a longer lead time to custom cabinets.
- Built in larger sections and fit site specific measurements.
- There is practically no limit to wood species, finish and built in options.
- Installation is typically done by the cabinet shop.

*Frameless
Cabinets
“European”*

*Face-Frame
Cabinets
“Traditionally
Built”*



FRAMELESS
CABINETS



FACE-FRAME
CABINETS

Cabinet Heights



*Open cabinet
tops*

Soffits

To the ceiling



*Open cabinet
tops*

Soffits

To the ceiling



*Open cabinet
tops*

Soffits

To the ceiling



Woods



Maple

Oak

Cherry

Pine

Knotty Alder

Hickory



Maple

Oak

Cherry

Pine

Knotty Alder



Maple

Oak

Cherry

Pine

Knotty Alder

Hickory



Maple

Oak

Cherry

Pine

Knotty Alder

Hickory



Maple

Oak

Cherry

Pine

Knotty Alder

Hickory



Maple

Oak

Cherry

Pine

Knotty Alder

Hickory



Cabinet Interiors

- Birch plywood interiors
- MDF or particle board interiors
- Melamine interiors – Most common white and maple

Finishing your Cabinets



Stain
Paint
Glaze
Veneer



Stain
Paint
Glaze
Veneer



Stain
Paint
Glaze
Veneer



Stain
Paint
Glaze
Veneer



Door Styles



Veneer

Slab

1/4 Panel

Raised Panel

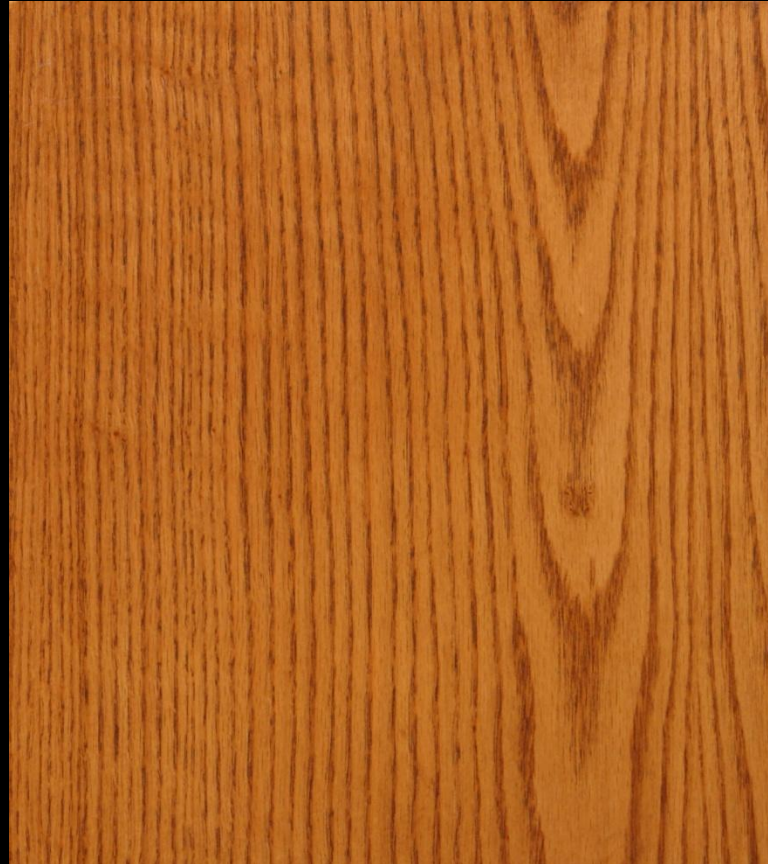
Mission or Shaker

Double Mission

Plank

Mitered

Applied Molding



Veneer

Slab

1/4 Panel

Raised Panel

Mission or Shaker

Double Mission

Plank

Mitered

Applied Molding



Veneer

Slab

1/4 Panel

Raised Panel

Mission or Shaker

Double Mission

Plank

Mitered

Applied Molding



Veneer

Slab

1/4 Panel

Raised Panel

Mission or Shaker

Double Mission

Plank

Mitered

Applied Molding



Veneer

Slab

1/4 Panel

Raised Panel

Mission or Shaker

Double Mission

Plank

Mitered

Applied Molding



Veneer

Slab

1/4 Panel

Raised Panel

Mission or Shaker

Double Mission

Plank

Mitered

Applied Molding



Veneer

Slab

1/4 Panel

Raised Panel

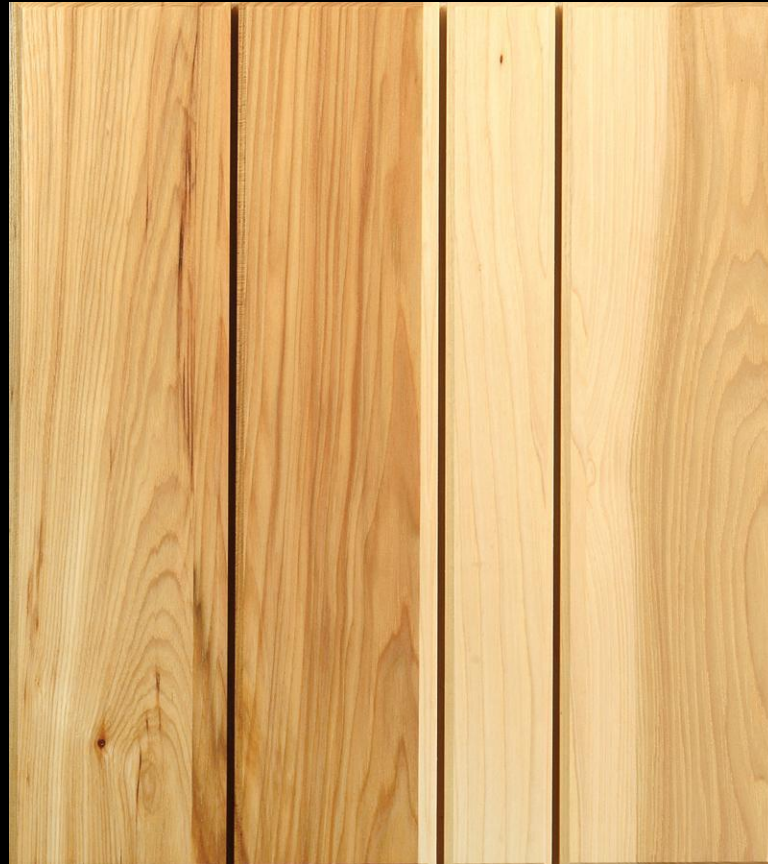
Mission or Shaker

Double Mission

Plank

Mitered

Applied Molding



Veneer

Slab

1/4 Panel

Raised Panel

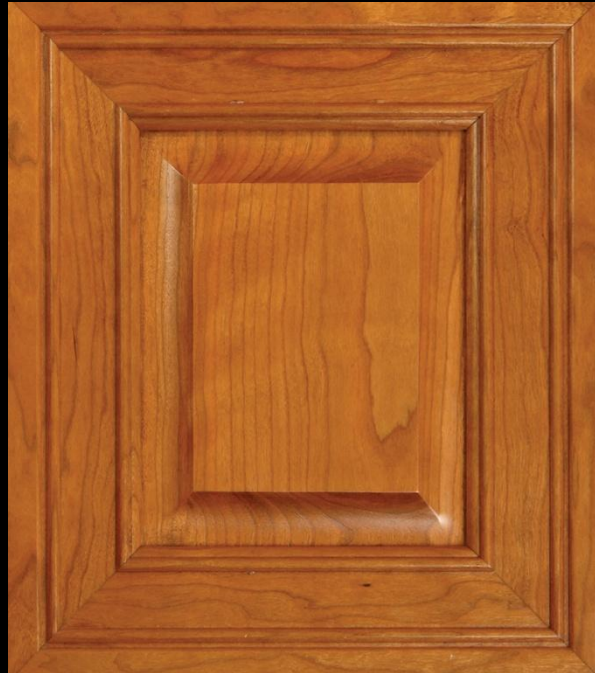
Mission or Shaker

Double Mission

Plank

Mitered

Applied Molding



Veneer

Slab

1/4 Panel

Raised Panel

Mission or Shaker

Double Mission

Plank

Mitered

Applied Molding



*Partial Overlay
Doors*

*Full Overlay
Doors*

Inset Doors



*Partial Overlay
Doors*

*Full Overlay
Doors*

Inset Doors



*Partial Overlay
Doors*

*Full Overlay
Doors*

Inset Doors



Glass Inserts



Plain Glass
Glass with
Wood Grids
Leaded Glass



Plain Glass
Glass with
Wood Grids
Leaded Glass



Plain Glass
Glass with
Wood Grids
Leaded Glass



Hinges and Hardware



*Concealed
Hinges*

*Exposed
Hinges*

*Knobs
and Pulls*



*Concealed
Hinges*

*Exposed
Hinges*

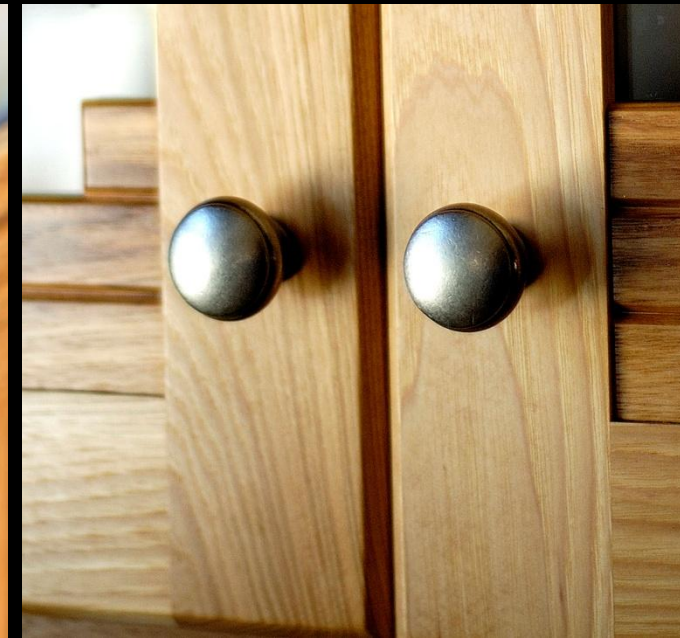
*Knobs
and Pulls*



*Concealed
Hinges*

*Exposed
Hinges*

*Knobs
and Pulls*



Cabinet Accessories



Roll Out Shelves

Drawer Dividers

Recycling Centers

Spice Storage

Lazy Susans

Plate Storage

*Cookie Sheet
Dividers*

*Appliance
Garages*

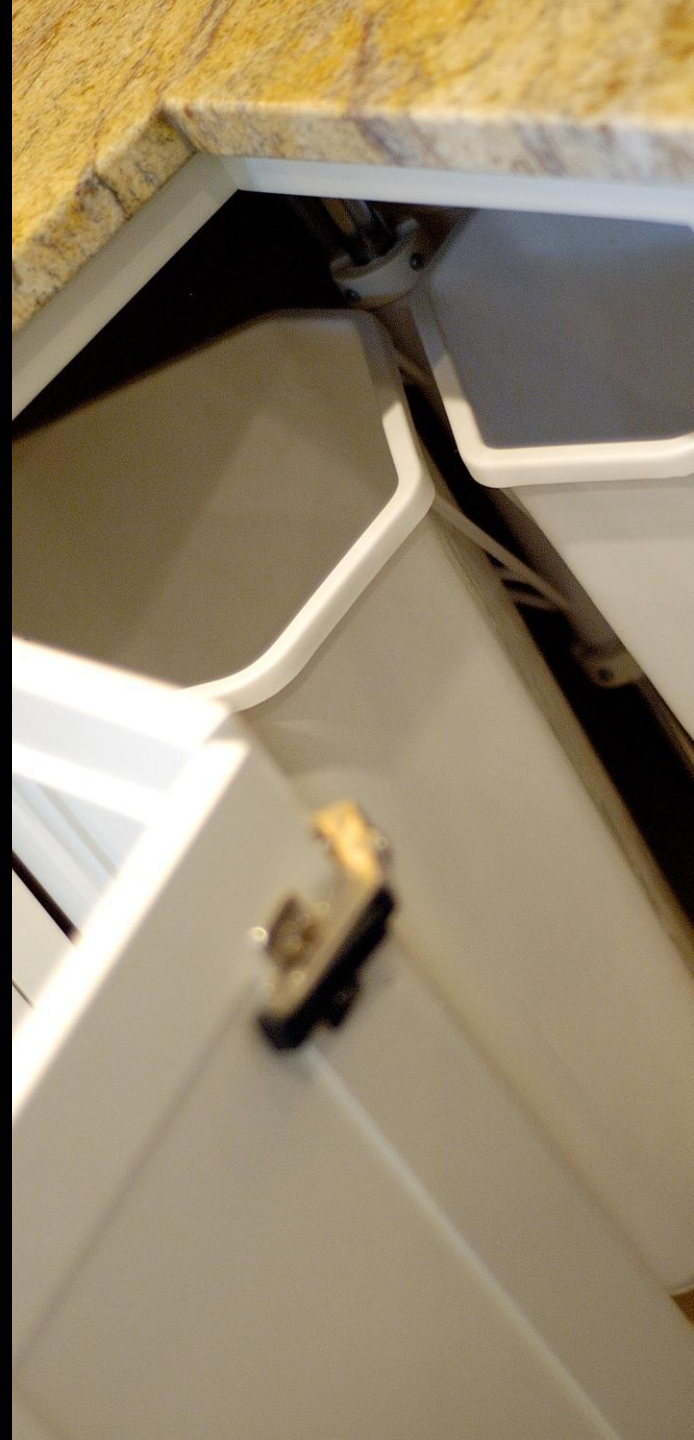
Get Organized



Roll Out Shelves
Drawer Dividers
Recycling Centers
Spice Storage
Lazy Susans
Plate Storage
Cookie Sheet
Dividers
Appliance
Garages
Get Organized



Roll Out Shelves
Drawer Dividers
Recycling Centers
Spice Storage
Lazy Susans
Plate Storage
Cookie Sheet
Dividers
Appliance
Garages
Get Organized



Roll Out Shelves

Drawer Dividers

Recycling Centers

Spice Storage

Lazy Susans

Plate Storage

*Cookie Sheet
Dividers*

*Appliance
Garages*

Get Organized



Roll Out Shelves
Drawer Dividers
Recycling Centers
Spice Storage
Lazy Susans
Plate Storage
Cookie Sheet
Dividers
Appliance
Garages
Get Organized



Roll Out Shelves
Drawer Dividers
Recycling Centers
Spice Storage
Lazy Susans
Plate Storage
Cookie Sheet
Dividers
Appliance
Garages
Get Organized



Roll Out Shelves
Drawer Dividers
Recycling Centers
Spice Storage
Lazy Susans
Plate Storage
Cookie Sheet
Dividers
Appliance
Garages
Get Organized



Roll Out Shelves
Drawer Dividers
Recycling Centers
Spice Storage
Lazy Susans
Plate Storage
Cookie Sheet
Dividers
Appliance
Garages
Get Organized



Roll Out Shelves

Drawer Dividers

Recycling Centers

Spice Storage

Lazy Susans

Plate Storage

*Cookie Sheet
Dividers*

*Appliance
Garages*

Get Organized



Countertops



Laminate
Stone
Solid Surface
Wood



Laminate
Stone
Solid Surface
Wood



Laminate
Stone
Solid Surface
Wood



Laminate
Stone
Solid Surface
Wood



Backsplashes



Porcelain
Subway Tile
Ceramic Tile
Glass Tile
Brush
Stainless
Granite



Porcelain
Subway Tile
Ceramic Tile
Glass Tile
Brush
Stainless
Granite



*Porcelain
Subway Tile*

Ceramic Tile

Glass Tile

Brush

Stainless

Granite



*Porcelain
Subway Tile*

Ceramic Tile

Glass Tile

*Brush
Stainless*

Granite



*Porcelain
Subway Tile*

Ceramic Tile

Glass Tile

Brush

Stainless

Granite



Kitchen Sinks



Stainless

*Enameled Cast
Iron*

Solid Surface

Composites

Apron Front

Ceramic



Stainless

*Enameled Cast
Iron*

Solid Surface

Composites

Apron Front

Ceramic



Stainless

*Enameled Cast
Iron*

Solid Surface

Composites

Apron Front

Ceramic



Stainless

*Enameled Cast
Iron*

Solid Surface

Composites

Apron Front

Ceramic



Stainless

*Enameled Cast
Iron*

*Solid Surface
Composites*

Apron Front

Ceramic



Stainless

*Enameled Cast
Iron*

Solid Surface

Composites

Apron Front

Ceramic



Architectural



Elements



*Walnut pegs
and trim
accents with
quartersawn
oak*



*Turned
columns and
brackets*



*Furniture
style base*



*Distressing
and
Rosmaling*



Choosing Colors



Light
Dark
Warm



Light
Dark
Warm



Light
Dark
Warm



*Open
floor plan*



Trends



*Drawers
dishwasher
refrigerator
microwave*

Pot Fillers

Cook Sink

Warming Oven

Brick Oven



*Drawers
dishwasher
refrigerator
microwave*

Pot Fillers

Cook Sink

Warming Oven

Brick Oven



*Drawers
dishwasher
refrigerator
microwave*

Pot Fillers

Cook Sink

*Warming
Oven*

Brick Oven



Drawers
dishwasher
refrigerator
microwave

Pot Fillers

Cook Sink

*Warming
Oven*

*Brick
Oven*



Drawers
dishwasher
refrigerator
microwave

Pot Fillers

Cook Sink

*Warming
Oven*

Brick Oven



Drawers
dishwasher
refrigerator
microwave

Pot Fillers

Cook Sink

*Warming
Oven*

Brick Oven



*Drawers
dishwasher
refrigerator
microwave*

Pot Fillers

Cook Sink

*Warming
Oven*

Brick Oven



Questions?

